

Electromechanical timers: They are supplied with connectors and fixing clip.
To get a DPDT output, you have to use electromechanical timers as below.

References	Sizes	Supply 50Hz
67990-Tempo-48-24-1RT	48*48	24
67990-Tempo-48-110-1RT	48*48	110
67990-Tempo-48-230-1RT	48*48	230
67990-Tempo-96-24-1RT	96*96	24
67990-Tempo-96-230-1RT	96*96	230
67990-Temp Q-48-24-2RT	48*48	24
67990-Temp Q-48-230-2RT	48*48	100..230



Limit current relay = Anode Overcurrent Limit: Intensity range on request; Mainly 1 up to 4 A.
Electronic version is supplied with resistor sensor and memory.

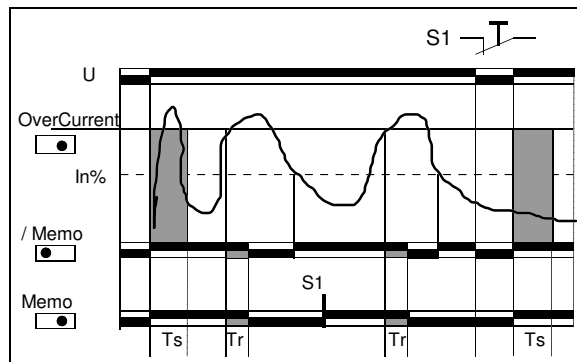
Ref: 67990-Disrupt Anode mechanic
Ref: 67990-Disrupt Anode electronic

Electronic Anode Current Disrupter :

- It is drawn with filters in order to bear HF perturbations.
- It is supplied with all modern functions:
 - * Sensitivity: 1mA ..10A with insulating shunt
 - * Alternative or Direct Current
 - * Disruption with memory & timing reset
 - * Safety (relay: NO ou NF)
 - * Limit I et %I - timing start - peak clipping
 - * 2° outputs 1RT

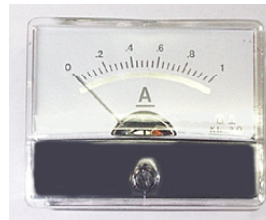
Running diagramm

- S1 = Reset <0,1 sec
- U = Supply
- R = Relay
- Ts = Timing Start: 0..10 sec
- Tr = Timing Peak Clipping: 0..5 sec



Ammeters: They are supplied with graduation adapted to the machine.

Reference	Current Acc	Dimensions W H	Technology
67990-Ammet-0.5A	0,5	55 * 44	Ferro-Mag
67990-Ammet-1A	1,0	55 * 44	Ferro-Mag
67990-Ammet-3A	3,0	55 * 44	Ferro-Mag
67990-Ammet-6A	6,0	55 * 44	Ferro-Mag
67990-Ammet-10A	10,0	55 * 44	Ferro-Mag
67990-Ammet-15A	15,0	55 * 44	Ferro-Mag
67990-Ammet-100mV	Shunt	60 * 47	Magnet



Some galvanometers need an external shunt.
They are supplied with insulating fixing devices.

Ref: 67990-Shunt-10A / 100mV



Intensity _____
Voltage input of galva _____

Foot switch: They are used for controlling the moving down of press for tarpaulins welding machines. It is supplied with specific connexion ar automaton input.



Ref: 67990-Foot switch

EMC Filter Components: For protection of all electromechanical components : Light - Fans - Timer - Relay - Automaton



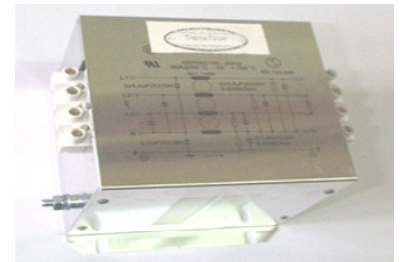
Ceramic capacitor 10nF - 3000v - 1A
Reference: 67990-C-10nF-3kV

Ferrit in 2 parts to plant on existing cables.
Reference: 67990-Ferrit D5
Reference: 67990-Ferrit D8



EMC Filter Supply: This Filter has been designed to avoid HF disruptions on electrical supply and to protect computers in the factory.

- * Voltage: 400Vac - 1 ou 3 Phases
- * 100VA for accessories: laser, automato antiflash, light, servomotor.....
- * 3kVA up to 40kVA for machines



References	Sizes X * Y * Z	Current 50Hz
67990-Filtre 1ph 100VA	56 * 31 * 24	1
67990-Filtre 1ph 3kVA	110 * 130 * 50	17
67990-Filtre 3ph 20kVA	155 * 170 * 120	35
67990-Filtre 3ph 40kVA	100 * 200 * 350	70



Industrial Keyboard : drawn for proofness against HF perturbations.
You can work just near electrode or cavity even if radiations are maximum.
Reference: 67990-HF Keyboard